



**WEATHERBANK, INC. Develops  
Hyper-Accurate, "Snow-On-Ground,"  
"Water in Snow Pack," and "Prior 24-Hour Rainfall"  
Mapping Application**

***MEDIA CONTACT:***

Michael R. Root, Executive VP / CFO  
Phone: (405) 359-0773  
E-mail: [mroot@weatherbank.com](mailto:mroot@weatherbank.com)

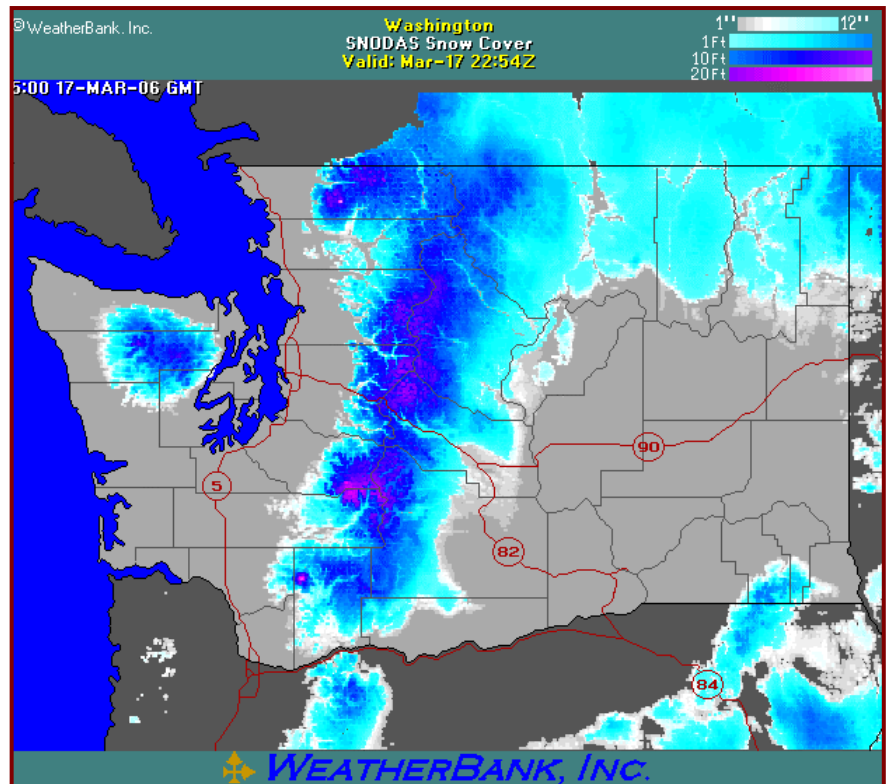
March 17, 2006, EDMOND, OKLAHOMA. WeatherBank, Inc., a leader in the weather services industry, announced today that it has generated a new mapping algorithm that will present a hyper-accurate display of current snow cover over the continental United States. Steven Root, WeatherBank's President and CEO, stated the algorithm will run in a daily format and maps will be available for the United States, seven regions of the U.S., and each of the lower 48 states.

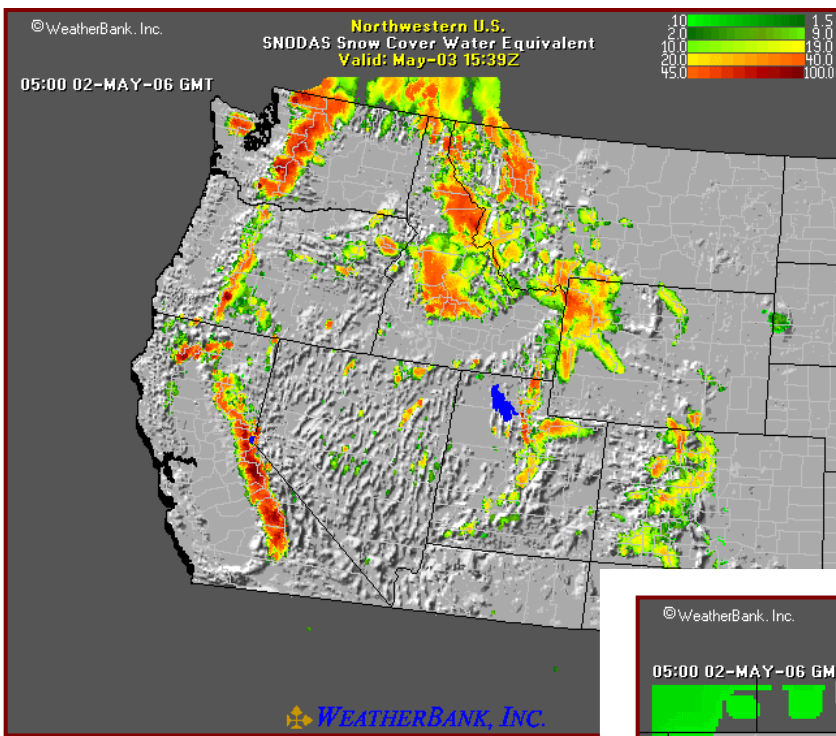
Root also added that the resolution of the map presentation is on the order of less than 1 Km (0.6 mile).

"The information presented by these displays will be immediately useful to State Departments of Transportation, commercial transportation companies and the general consumer.

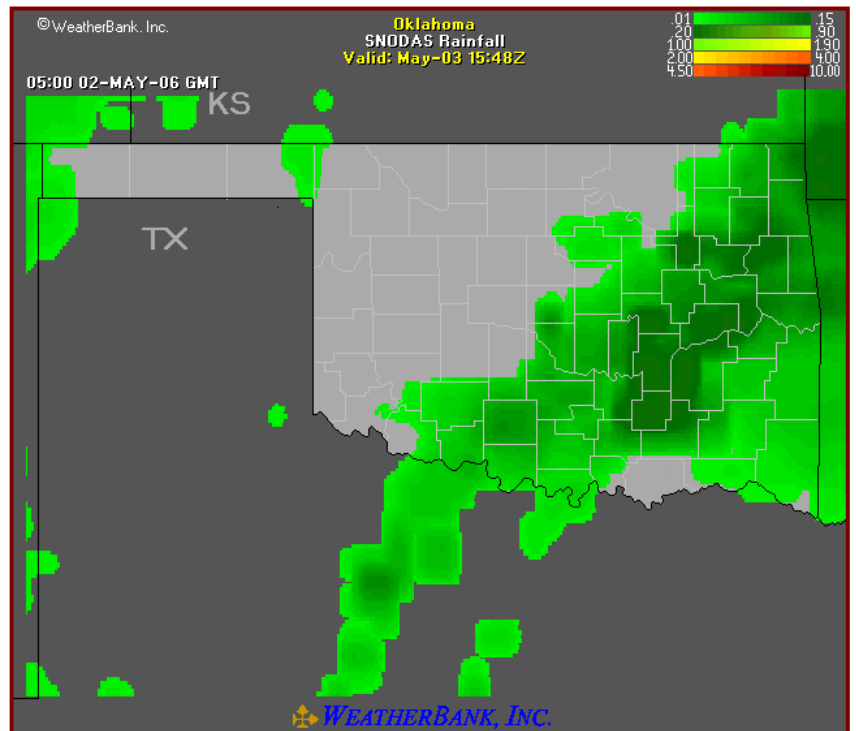
WeatherBank will also layer the snow-on ground information with other demographic data, including highways and railways.

This database also has the capability of presenting rainfall for the prior 24 hours and the water in the snow pack. Both of these parameters may be displayed on a map of the lower-48, United States, one of seven regional maps, and maps of individual states. Examples are presented on the following page.





**Water Content in Snow Pack (Inches, Regional Map)**



**Rainfall – Last 24 hours (Inches, State Map)**

WeatherBank, Inc., is located in Edmond, Oklahoma, a suburb of Oklahoma City. The company is a leader in providing custom weather data and products, with applications to all industries. The company also provides programming solutions for all applications.

WeatherBank has one of the largest meteorological teams of any private weather company, and operates 24 hours a day, seven days a week. We serve clients in all industries, including energy, transportation, emergency management, broadcasting and others. Get more information about WeatherBank's products and services on the World Wide Web at <http://www.weatherbank.com> or by calling Michael R. Root, Executive Vice President/CFO at (405) 359-0773.

###

*WEATHERBANK, INCORPORATED*  
 1015 WATERWOOD PARKWAY, SUITE J, EDMOND, OKLAHOMA 73034 U.S.A.  
 (405) 359-0773 / (405) 341-0115 FACSIMILE